

INSTRUCTION MANUAL

# TRACTION

H O B B Y

## FOUNDER II

OFF-ROAD

PERFORMANCE

1/8th SCALE ELECTRIC



## CAUTIONS



To prevent serious personal injury and/or property damage, operate all remotely controlled models in a responsible manner as outlined herein.

### CHOOSE THE RIGHT PLACE TO OPERATE YOUR R/C MODEL.

- Do not run on public streets or highways. This could cause serious accidents, personal injuries, and/or damage.
- Never run R/C models near people or animals.
- To avoid injury, do not run in confined spaces.
- Do not run where loud noises can disturb others, such as hospitals and residential areas.
- Never run indoors. There is high risk of fire and/or damage.

### INSPECT YOUR MODEL BEFORE OPERATION.

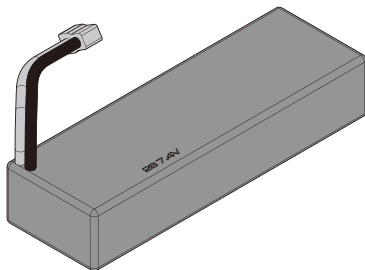
- Make sure that screws and nut are properly tightened. It is also a good idea to use removable thread lock wherever metal screws go into metal, especially for engine mounts and the engine pilot shaft.
- Always use fresh batteries for your transmitter and for your receiver to avoid losing control of the model.
- Always test the brakes and throttle before starting your engine to avoid losing control of the model.
- Make sure no one else is using the same radio frequency as you are using.

### AFTER OPERATION OF YOUR R/C MODEL.

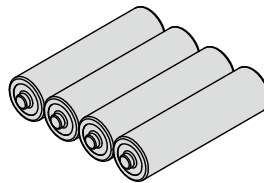
- Turn off receiver first, then turn off transmitter, this will prevent runaways.
- Be careful when handling batteries, they will be hot after running.
- Replace any batteries that have been dented or have frayed wires, short circuits can cause fire.
- Be sure to keep your R/C model clean of excess dirt and grease, this will increase the life.

## Equipment needed

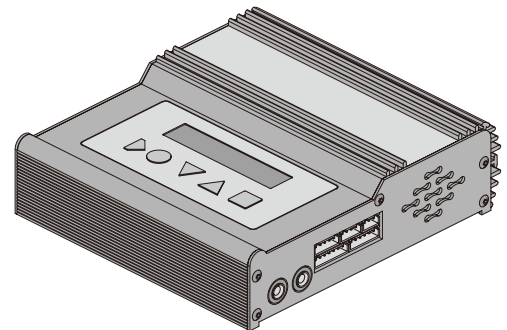
Battery Maximum Size :155mm×52mm×32mm



6 or 7-cell NiMH battery/2s-3s LiPo battery

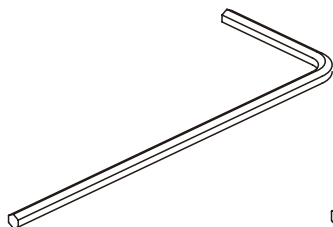


AA battery ×4

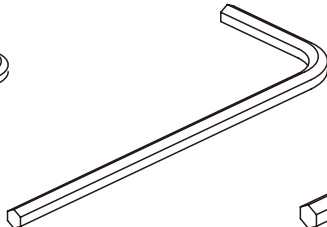


Charger

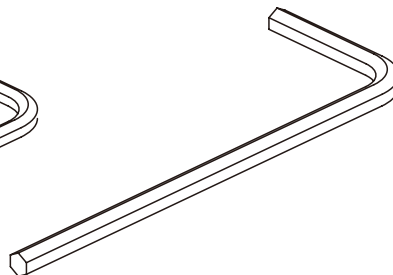
## Supplied Tools and Equipment



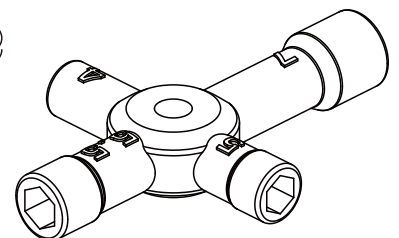
1.5mm "L" wrench



2.0mm "L" wrench

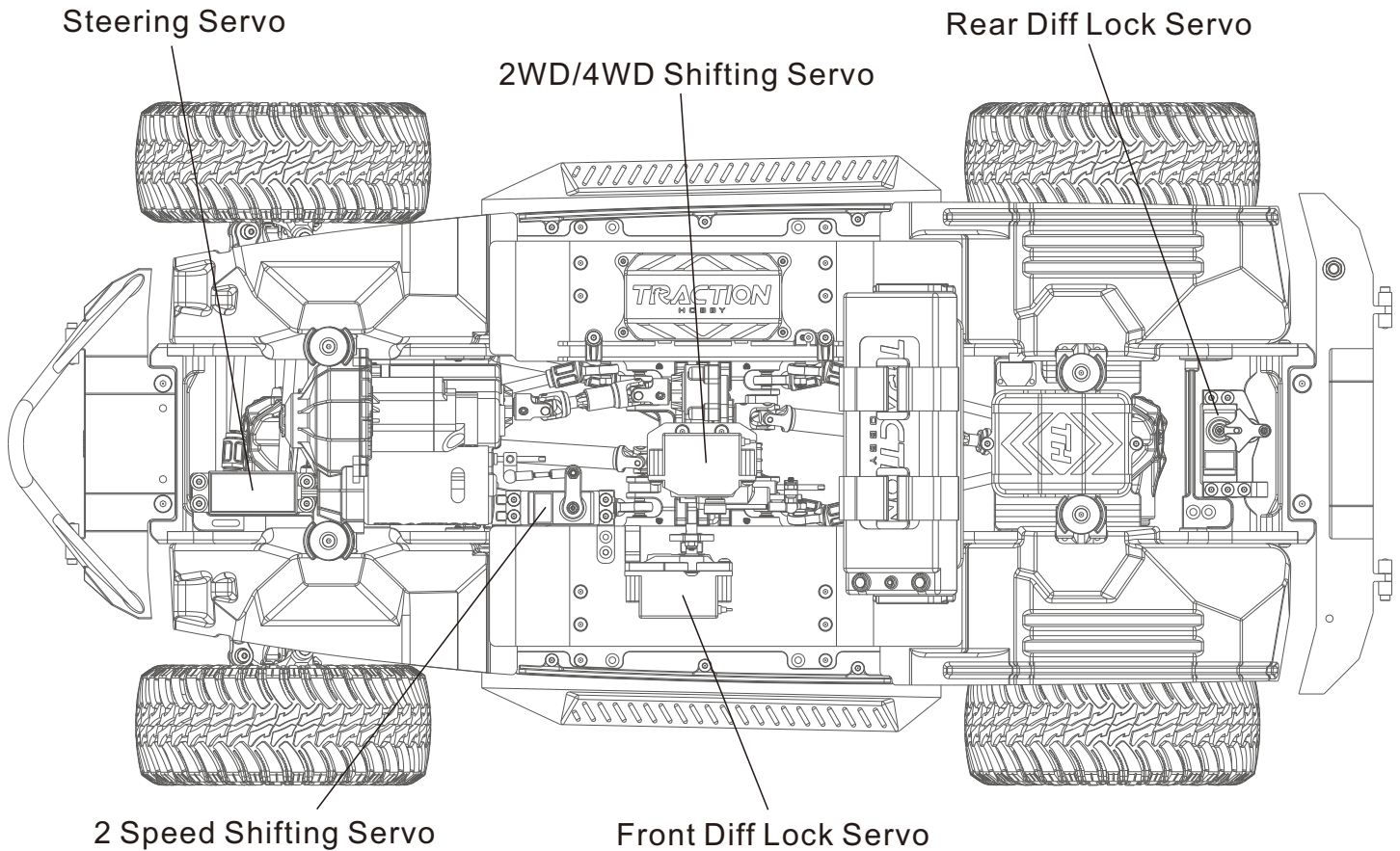


2.5mm "L" wrench



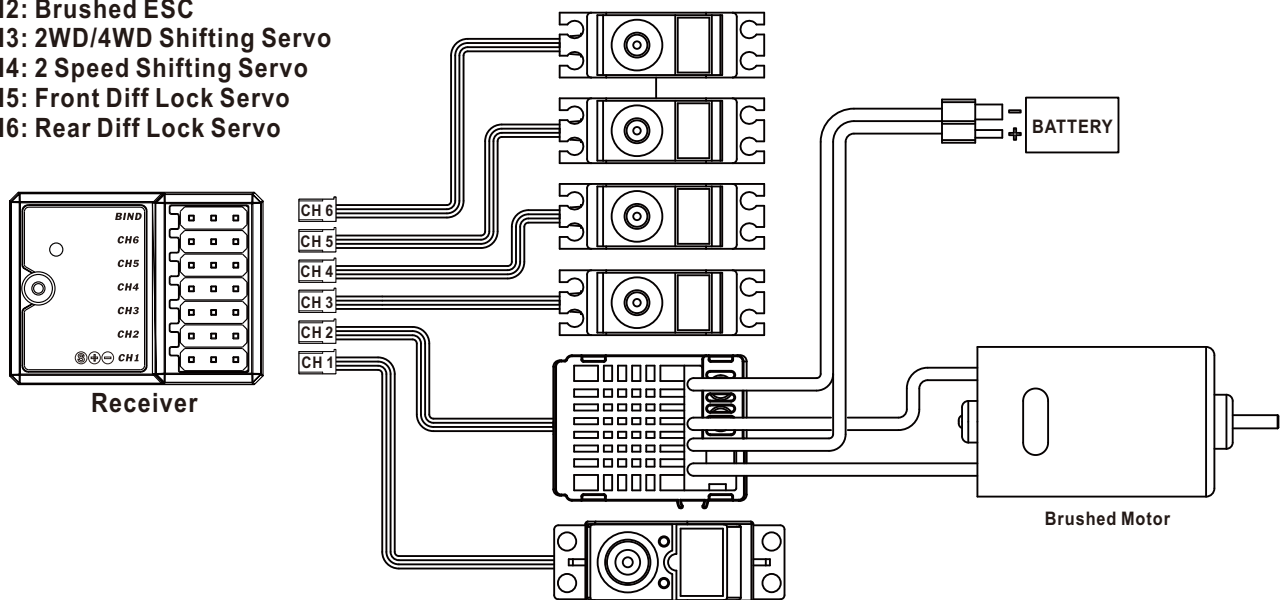
4-way wrench

## Chassis top view

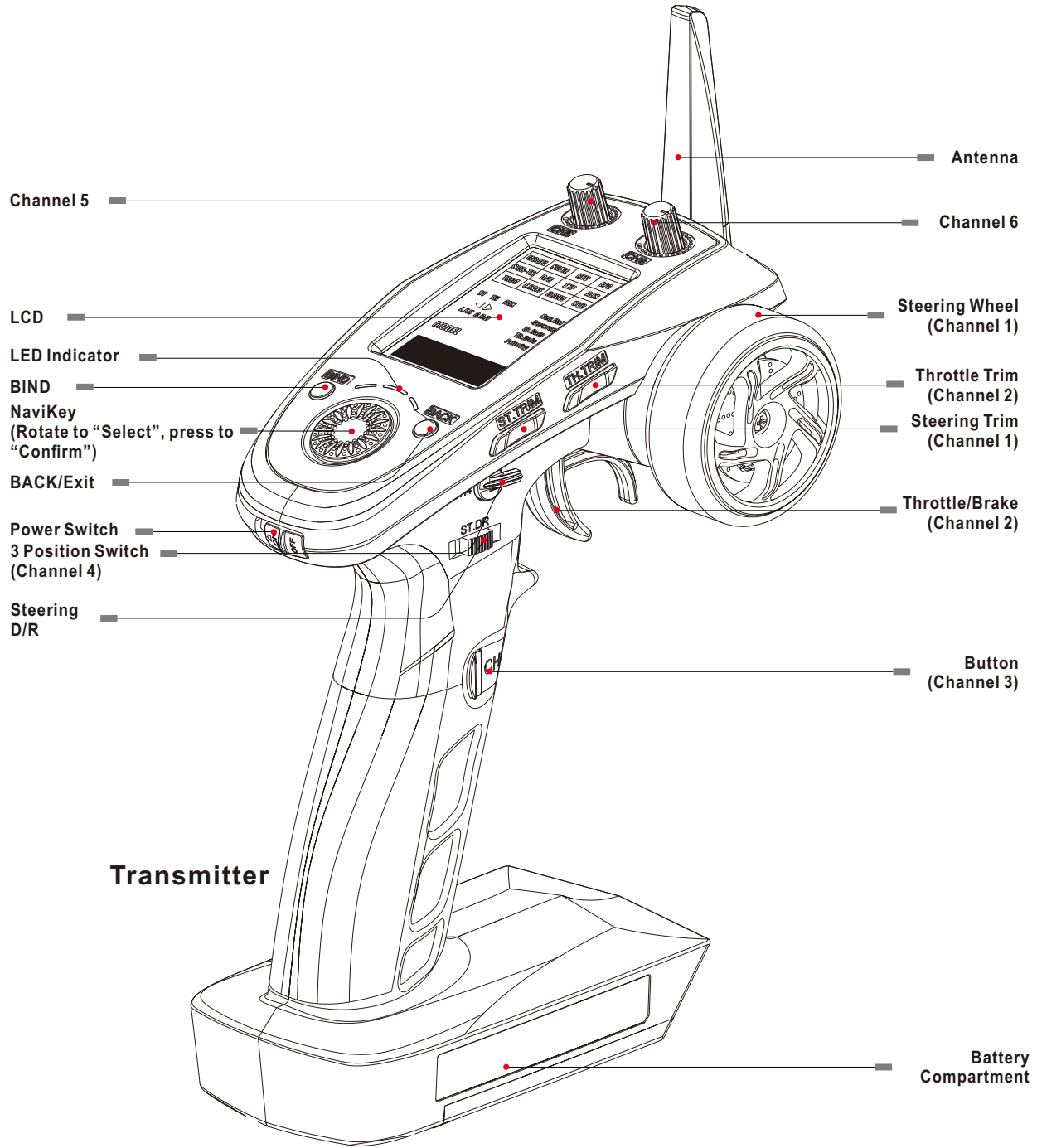


## Receiver Connection

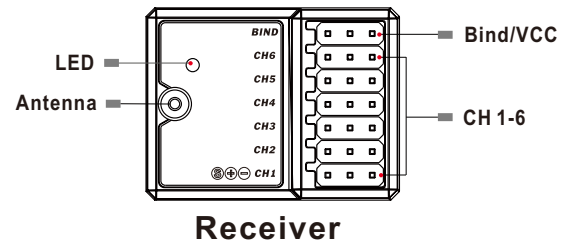
- CH1: Steering Servo
- CH2: Brushed ESC
- CH3: 2WD/4WD Shifting Servo
- CH4: 2 Speed Shifting Servo
- CH5: Front Diff Lock Servo
- CH6: Rear Diff Lock Servo



## Radio Maintenance



**Transmitter**



**Receiver**

## Servo Function Maintenance(CH3-CH6)

This product's standard version is RTR. It has been adjusted and ready to run. If you accidentally reset the transmitter, change another new THT6 or servos, please read the following guide carefully!

Before setting, make sure you have already setup the CH1(Steering) and CH2(Throttle), and no other servos connected to the CH3-CH6. Make sure the car is power on, throttle servo and steering servo is active, overhead the 4 wheels to make the wheels off the ground.

### ● 2 Speed Shifting Servo Setting

1. Press the Navkey to enter the function menu, then rotate the Navkey to select EPA. Press the Navkey again to enter the function. The channel name and number will begin to flash.
2. Rotate the Navkey to select the AUX Channel 4 and press the Navkey to confirm the selection.
3. Move the CH4 channel control, the system will display L.F.U (Left, Front, Up) or R.B.D (Right, Back, Down) depending on the selection. Press the Navkey again to confirm.
4. Rotate the Navkey to change the both side endpoint position to 40% and press the Navkey to confirm.
5. Plug the 2-speed servo cable into the receiver's Channel 4. Please notice the place of anode and cathode, then adjusting the "EPA".
6. Increase the L.F.U (Left, Front, Up) EPA gradually of the CH4, pay attention to the state of the 2-speed servo increase to be shown as "Chart.1", the red mount is as close as possible to the gearbox and the servo has no "Zizizi" sound, else decrease the value. Then pull the throttle trigger, if the red mount's position has no change. Move the CH4 channel control of TH-GT5 to shift the servo direction, the position of the servo arm is shown as "Chart.2", increase the R.B.D (Right, Back, Down) EPA gradually of the CH4 option then pull throttle trigger a little. Repeat the step till the servo has no "Zizizi" sound, else decrease the value. Finally check the 2-speed shifting function.

MODEL	NAME	REV	EPA
SUB-TR	D/R	EXP	ABS
TRIM	F.SAFE	CRAWL	SVC

AUX	
R.B.D	

4	40%
---	-----

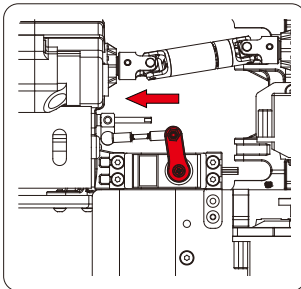


Chart.1 low speed servo state

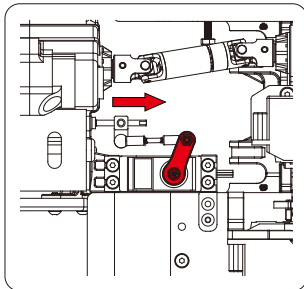


Chart.2 high speed servo state

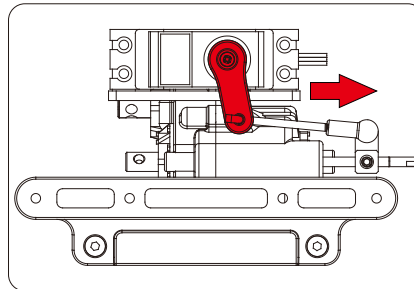


Chart.3 2WD servo state

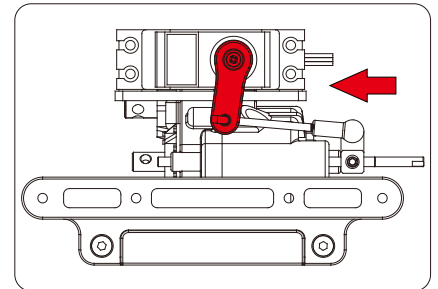


Chart.4 4WD servo state

### ● 2WD/4WD Shifting Servo Setting

1. Press the Navkey to enter the function menu, then rotate the Navkey to select EPA. Press the Navkey again to enter the function. The channel name and number will begin to flash.
2. Rotate the Navkey to select the AUX Channel 3 and press the Navkey to confirm the selection.
3. Press the CH3 button, the system will display L.F.U (left, front, up) or R.B.D (right, back, down) depending on the selection. Press the Navkey again to confirm.
4. Rotate the Navkey to change the both side endpoint position to 20% and press the Navkey to confirm.
5. Plug the corresponding servo cable into the receiver's Channel 3. Please notice the place of anode and cathode, then adjusting the "EPA".
6. Increase the L.F.U (Left, Front, Up) EPA gradually of the CH3, pay attention to the state of the shift servo, increase to be shown as "Chart.3", the red mount is as far away from the gearbox as possible and the servo has no "Zizizi" sound, else decrease the value. Then pull the throttle trigger, if the red mount's position has no change and the front wheels don't turn, press the CH3 button to shift the servo direction, the position of the servo arm is shown as "Chart.4", increase the R.B.D (Right, Back, Down) EPA gradually of the CH3, then pull throttle trigger a little. Repeat the step till the servo has no "Zizizi" sound. Finally check the 2WD/4WD shifting function.

MODEL	NAME	REV	EPA
SUB-TR	D/R	EXP	ABS
TRIM	F.SAFE	CRAWL	SVC

AUX	
R.B.D	

3	20%
---	-----

### ● Front and Rear Diff Lock Setting

1. Plug the corresponding servo cables into the receiver's Channel 5 and Channel 6. Please notice the place of anode and cathode, then adjusting the "EPA".
2. Pull back the toggle switch, the diff locks, the state is shown as "Chart.5", check if the wheels turn by hand. If the wheels turn, maybe the cable is too tight, loose the set screw to adjusting the cable till the diff locks, then tighten the set screw.
3. Push the toggle switch, the diff unlocks, the state is shown as "Chart.6", check if the wheels turn by hand. If the wheels not turn, check if the cable is too tight, then check if both ends of the cable are plugged into the corresponding groove.

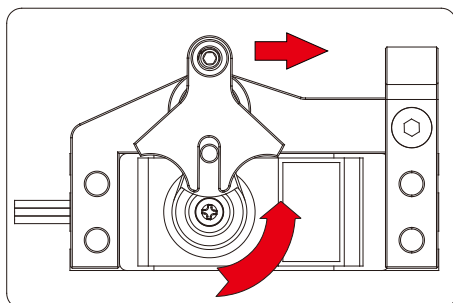


Chart.5 Diff lock servo state

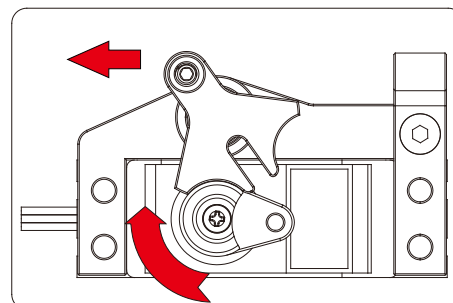
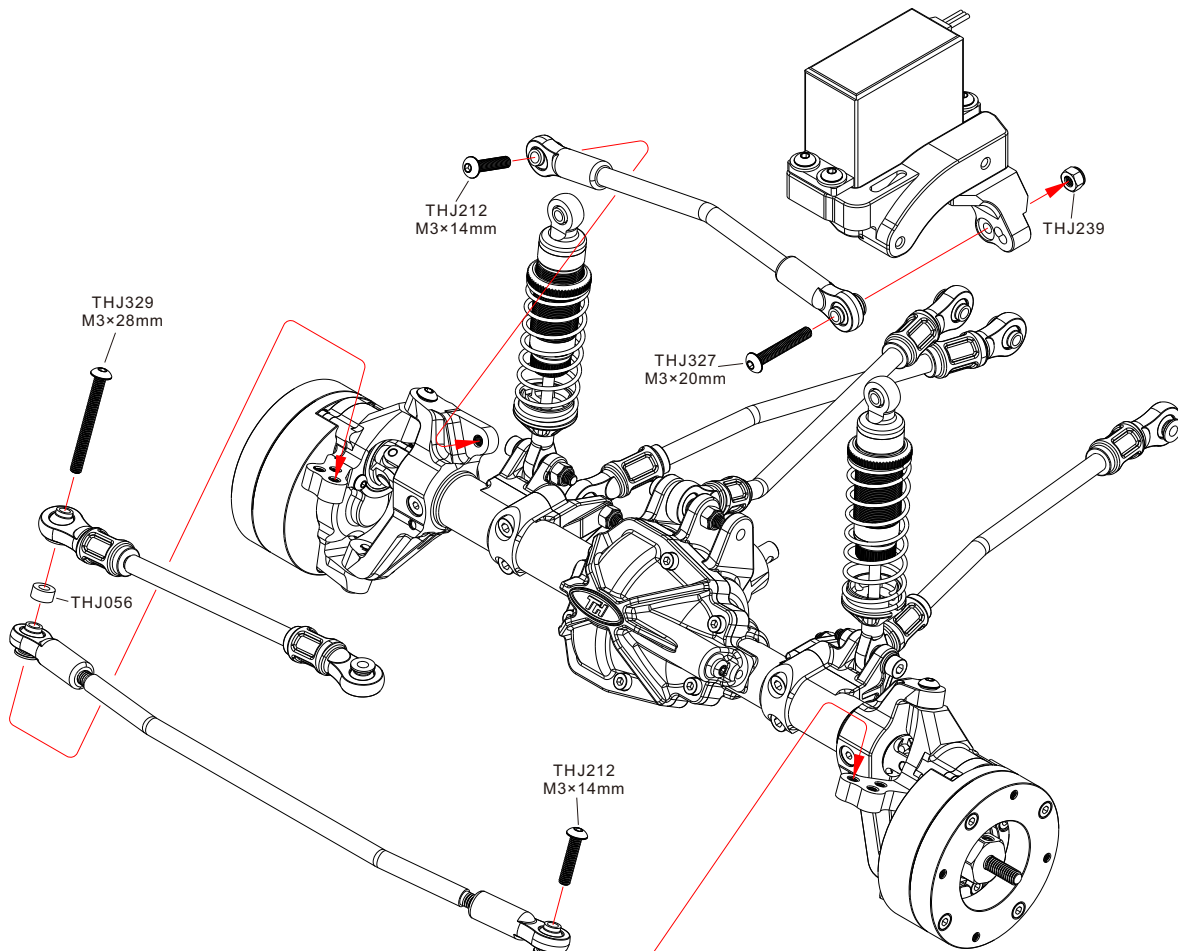
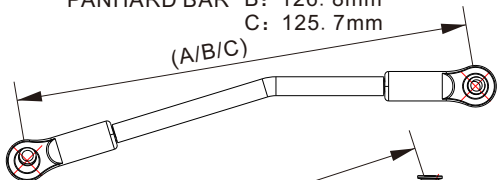


Chart.6 Diff unlock servo state

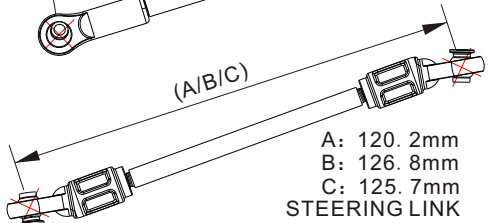
## Portal Axle Steering System Maintenance



PANHARD BAR  
 A: 120.2mm  
 B: 126.8mm  
 C: 125.7mm

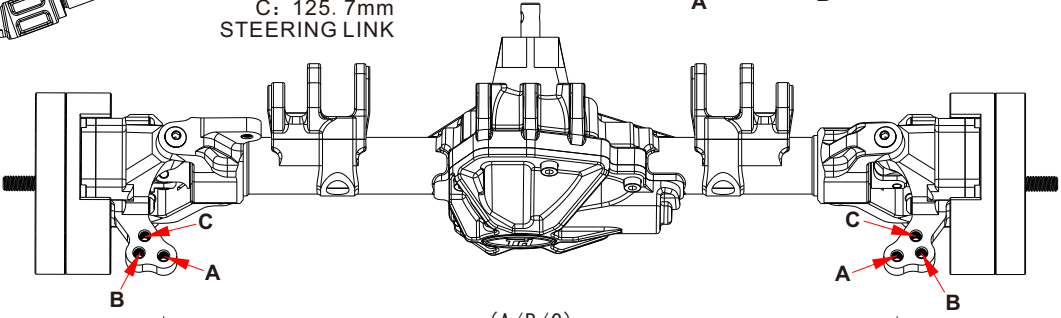
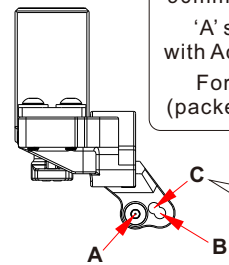


STEERING LINK  
 A: 120.2mm  
 B: 126.8mm  
 C: 125.7mm

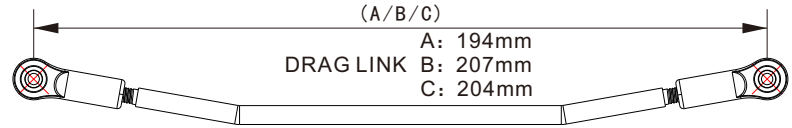


These three installation states setup are based on 90mm shock  
 'A' state is standard state, 'B' and 'C' states are setup with Ackermann steering  
 For 'B' and 'C' state, you should replace the linkages (packed in the parts bag)

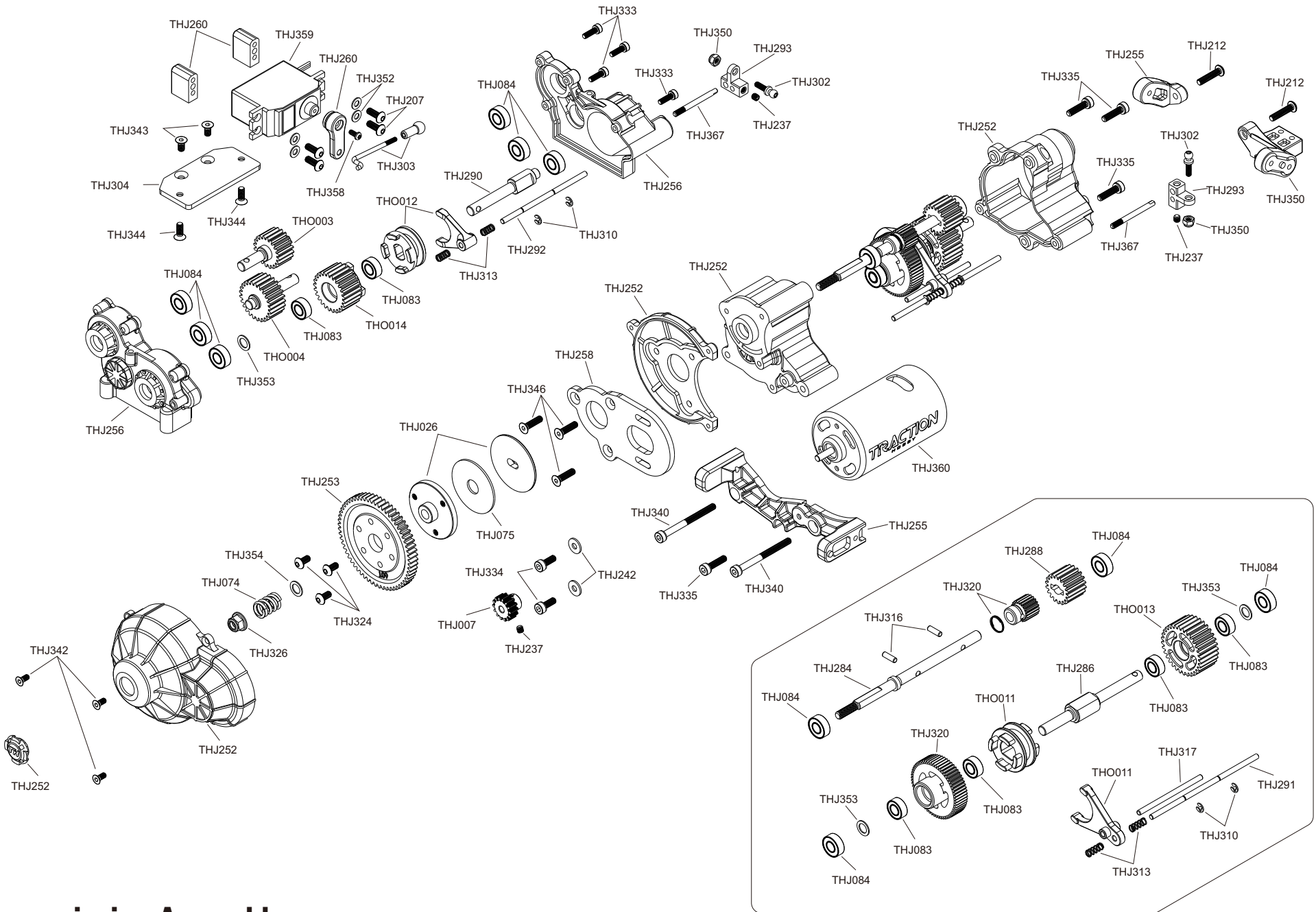
If you setup 'C' state, you must install a 4.6mm spacer (packed in the parts bag)



DRAG LINK  
 A: 194mm  
 B: 207mm  
 C: 204mm





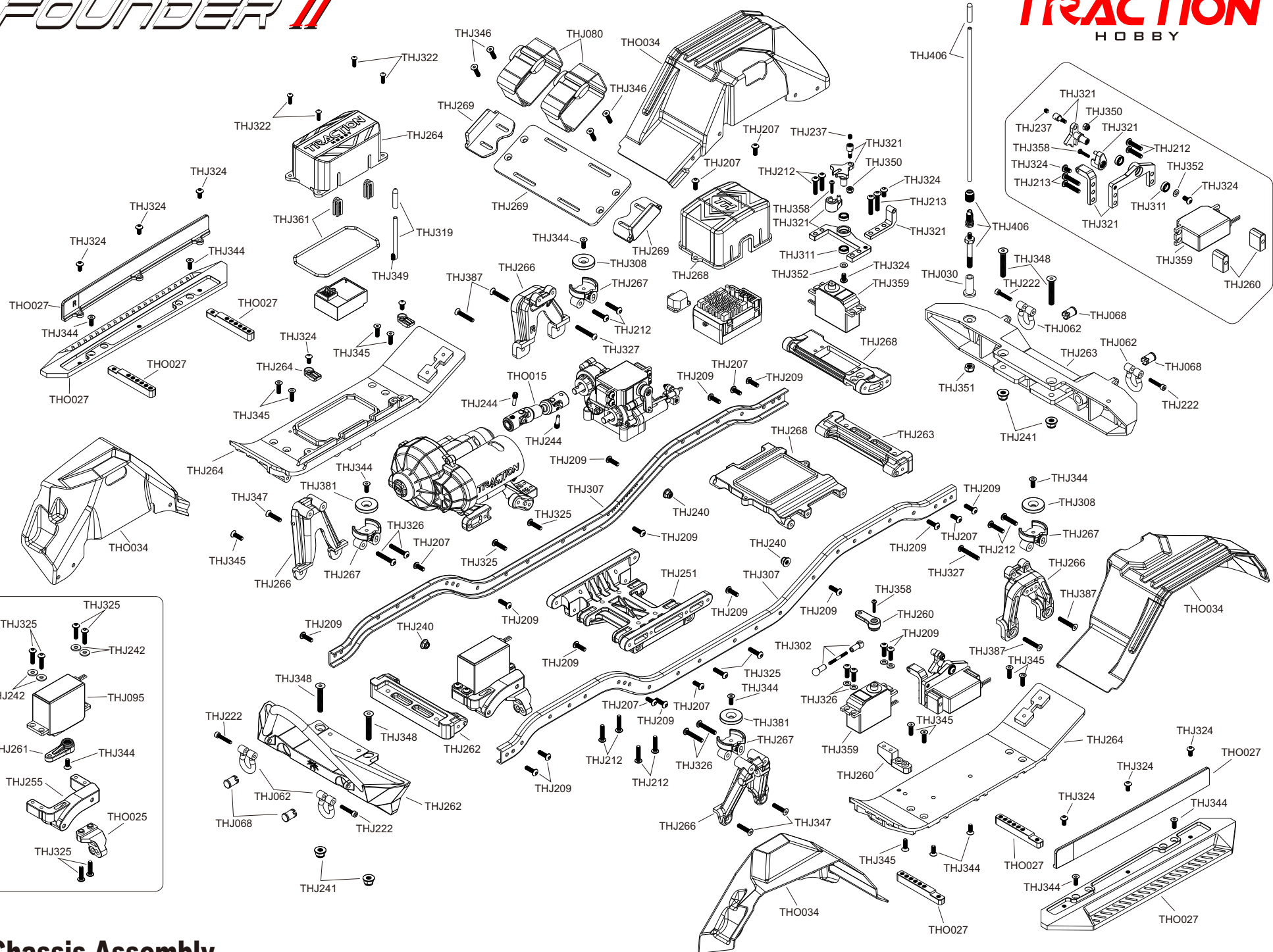


## Transmission Assembly



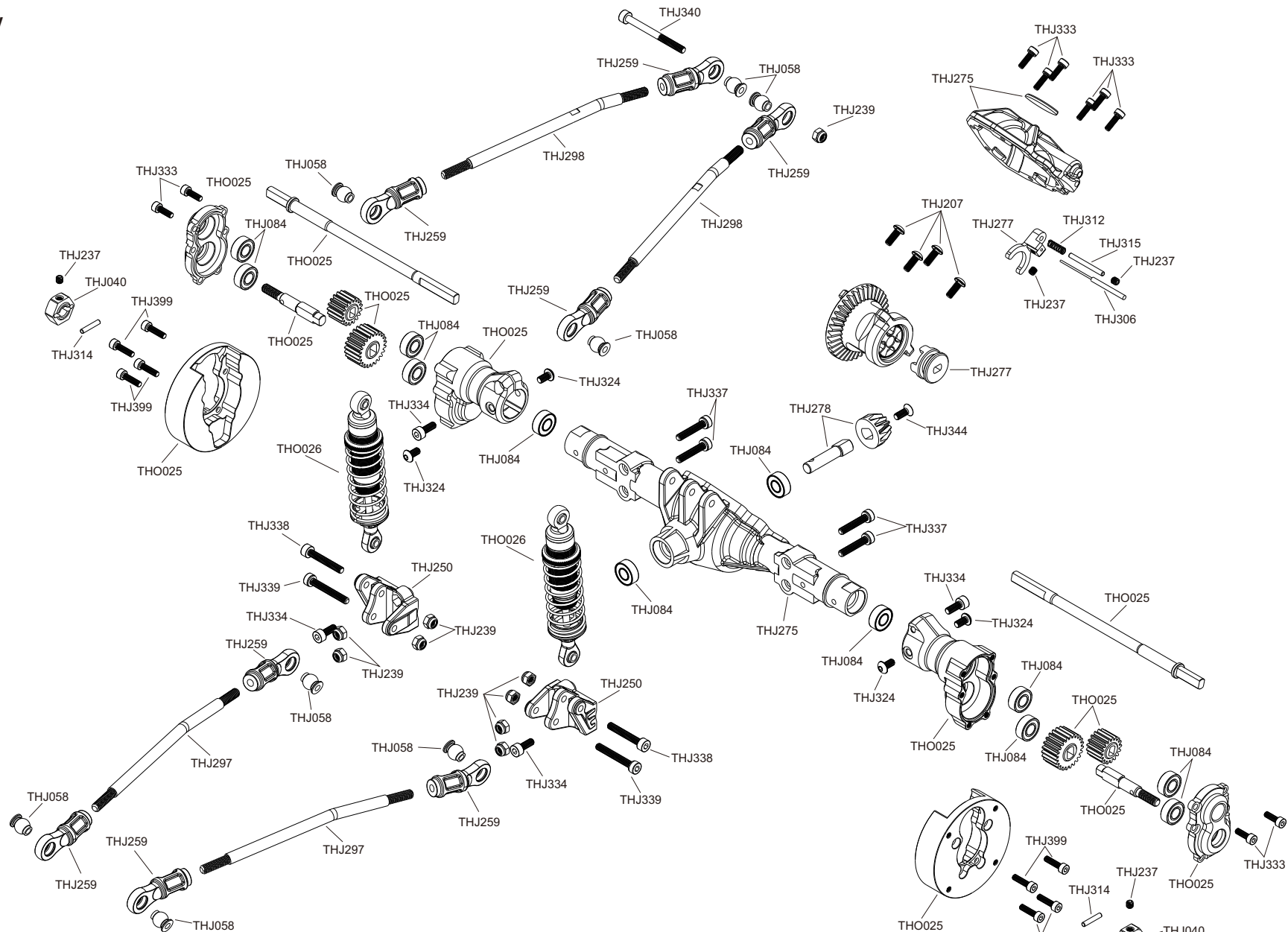
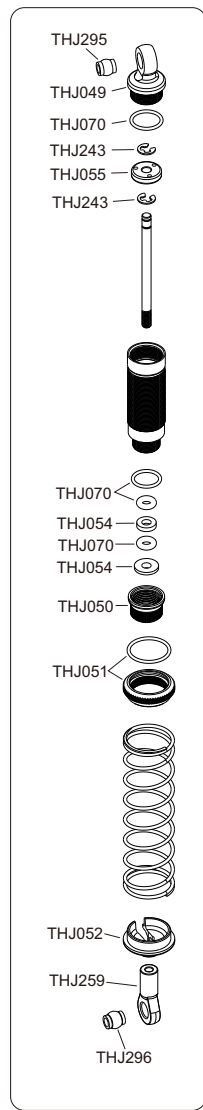
# FOUNDER II

**TRACTION**  
HOBBY



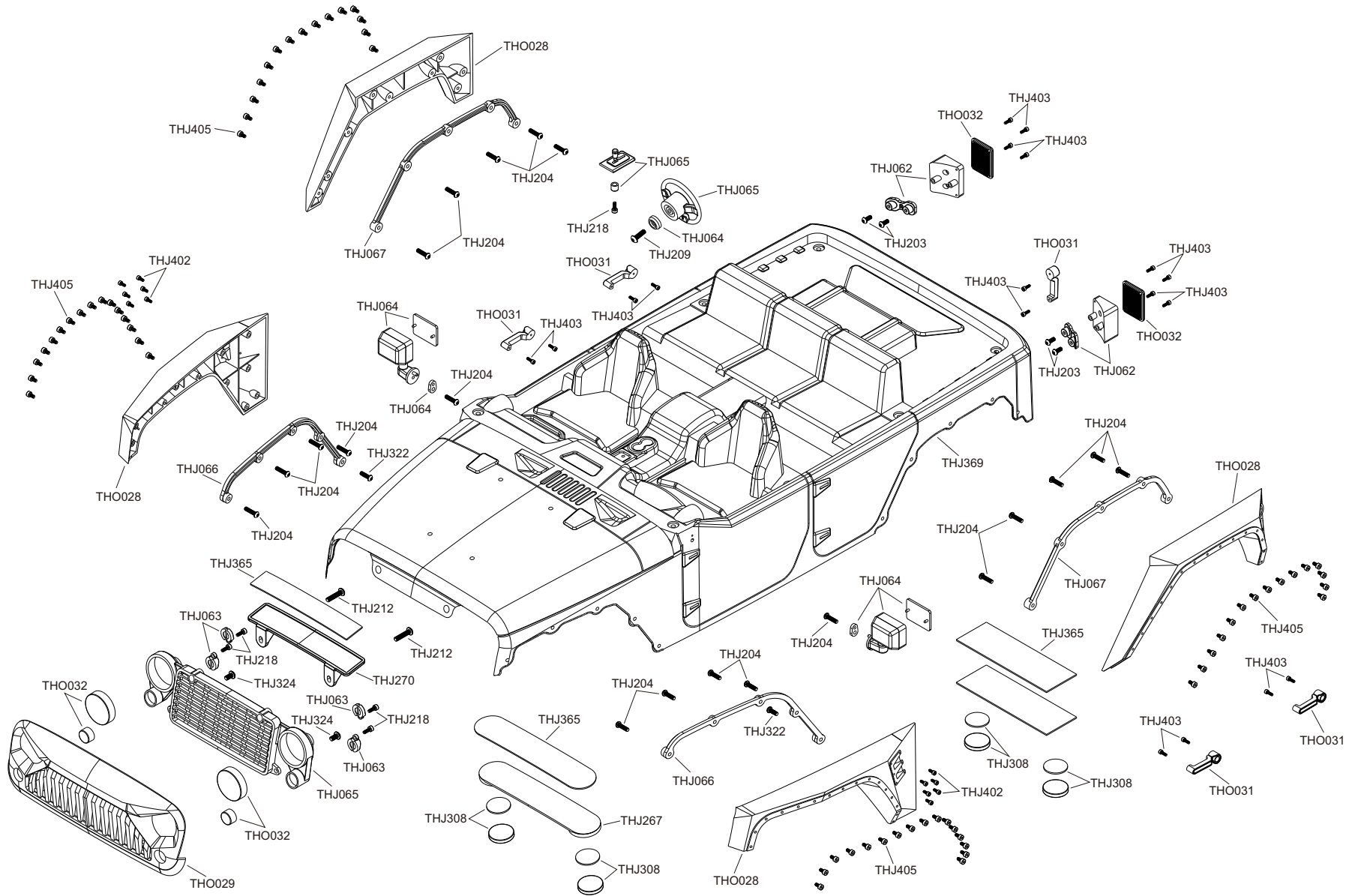
## Chassis Assembly

## Shock Assembly

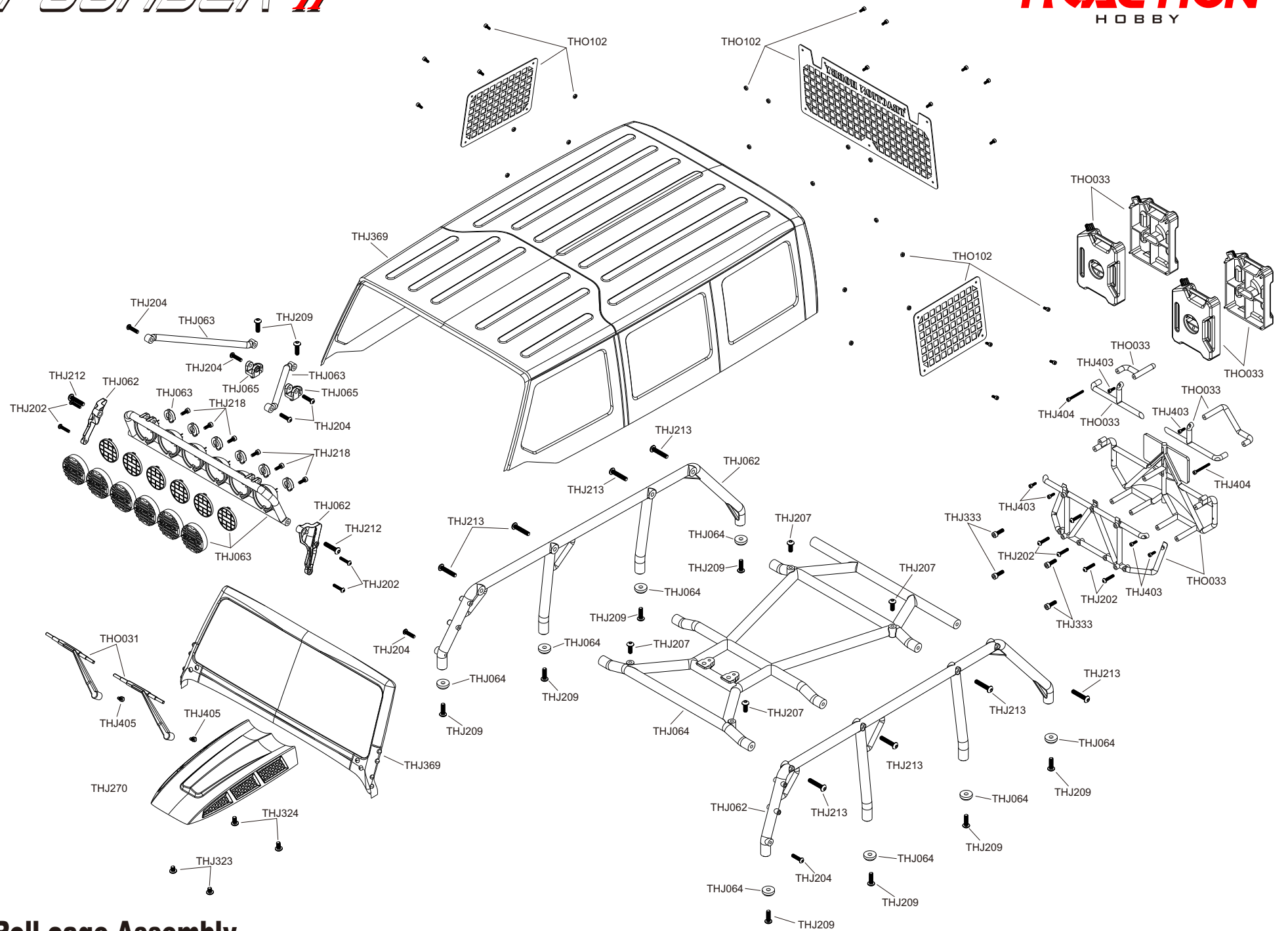


## Rear Assembly

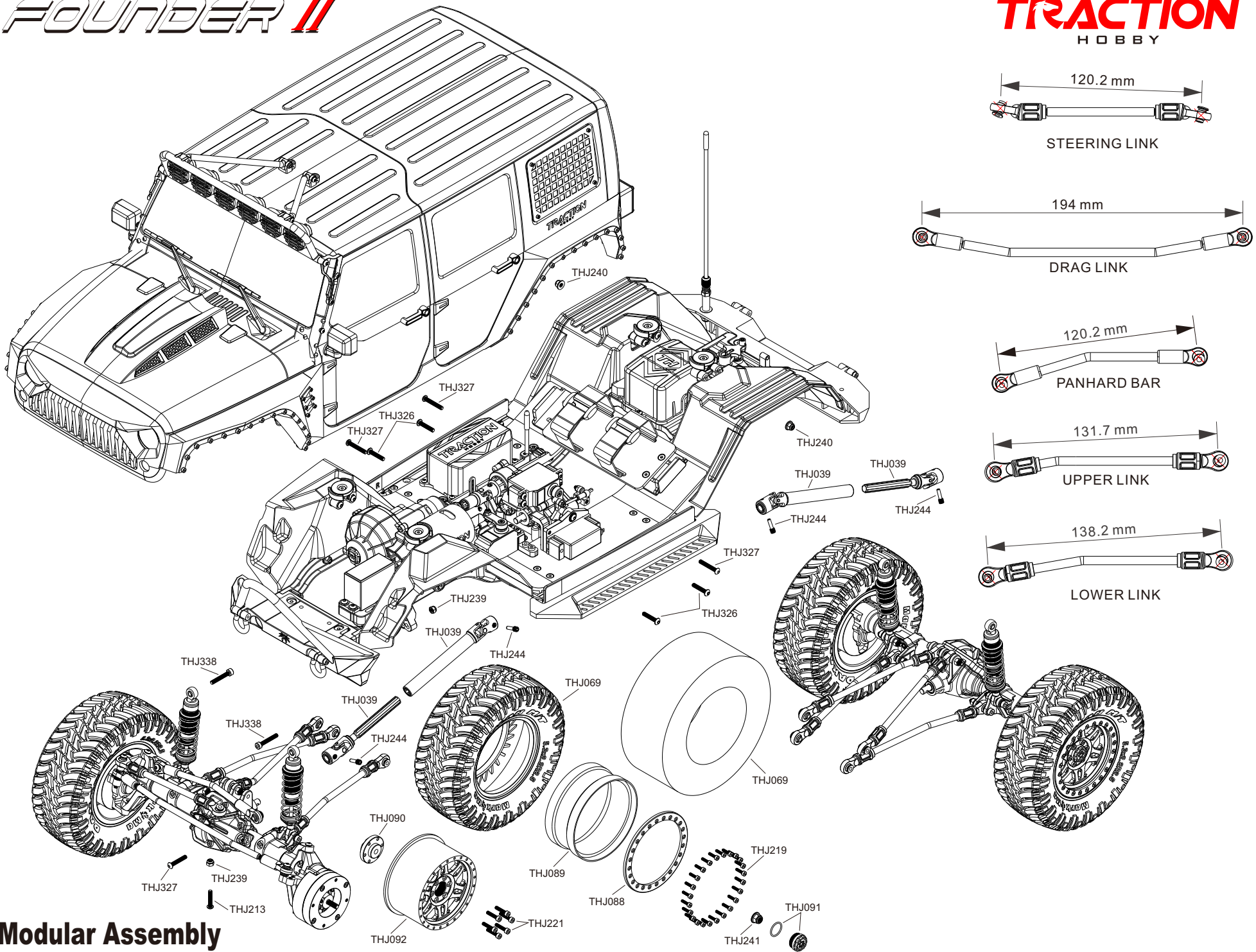
10



## Body Assembly



## Roll-cage Assembly



**Modular Assembly**

## Parts List

THJ007	Pinion gear 14T(1pc)	THJ311	Bearing 5×8×2.5mm(1pc)
THJ026	Slipper plate(1pc)	THJ312	Spring D2.6×12.7mm(1pc)
THJ038	King pin bushing(1pc)	THJ313	Spring(1pc)
THJ039	Drive shaft(2pcs)	THJ314	Pin 2.0×11mm(10pcs)
THJ040	Hex hub 12mm(2pcs)	THJ315	Pin 2.0×21mm(10pcs)
THJ058	Ball 7mm(5pcs)	THJ316	Pin 2.5×8mm(10pcs)
THJ074	Slipper spring(1pc)	THJ317	Pin 2.5×43mm(5pcs)
THJ075	Slipper pad(1pc)	THJ318	Pin 3×23mm(10pcs)
THJ078	Brushed ESC 60A(1pc)	THJ319	Antenna pipe set(1pc)
THJ080	Velcro strap 20×200mm(1pc)	THJ320	First gear set(1pc)
THJ083	Bearing 5×10×4(1pc)	THJ321	Self-lock device of diff lock(1pc)
THJ084	Bearing 5×11×4(3pcs)	THJ322	M2.5×8 Button head screw (black)(10pcs)
THJ086	Bearing 10×15×4(1pc)	THJ323	M3×4 Button head screw (black)(10pcs)
THJ095	Servo 20kg(1pc)	THJ324	M3×6 Button head screw (black)(10pcs)
THJ202	M2×10 Button head screw(black)(10pcs)	THJ325	M3×12 Button head screw(black)(10pcs)
THJ203	M2.5×6 Button head screw(black)(10pcs)	THJ326	M3×18 Button head screw(black)(10pcs)
THJ204	M2.5×10 Button head screw(black)(10pcs)	THJ327	M3×20 Button head screw(black)(10pcs)
THJ207	M3×8 Button head screw(black)(10pcs)	THJ328	M3×22 Button head screw(black)(10pcs)
THJ209	M3×10 Button head screw(black)(10pcs)	THJ329	M3×28 Button head screw(black)(10pcs)
THJ212	M3×14 Button head screw(black)(10pcs)	THJ333	M2.5×8 Cap head screw(black)(10pcs)
THJ213	M3×16 Button head screw(black)(10pcs)	THJ334	M3×8 Cap head screw(black)(10pcs)
THJ218	M2×6 Cap head screw(black)(10pcs)	THJ335	M3×12 Cap head screw(black)(10pcs)
THJ237	M3×3 Set screw(black)(10pcs)	THJ336	M3×14 Cap head screw(black)(10pcs)
THJ239	M3 Nylon nut(black)(10pcs)	THJ337	M3×16 Cap head screw(black)(10pcs)
THJ240	MNF30(10pcs)	THJ338	M3×20 Cap head screw(black)(10pcs)
THJ241	MNF40(10pcs)	THJ339	M3×22 Cap head screw(black)(10pcs)
THJ242	Washer 3.2×8×1mm(silver)(10pcs)	THJ340	M3×35 Cap head screw(black)(10pcs)
THJ243	E-clip 2.5mm(silver)(10pcs)	THJ341	M2×12 Flat head screw(black)(10pcs)
THJ244	M4×2.5×12mm screw shaft(10pcs)	THJ342	M2.5×6 Flat head screw(black)(10pcs)
THJ246	Differential Pads(10pcs)	THJ343	M3×6 Flat head screw(black)(10pcs)
THJ247	C Hub carrier set(1pc)	THJ344	M3×8 Flat head screw(black)(10pcs)
THJ249	Rear axle lock-out(1pc)	THJ345	M3×10 Flat head screw(black)(10pcs)
THJ250	Linkage seat(1pc)	THJ346	M3×12 Flat head screw(black)(10pcs)
THJ251	Frame brace plate(1pc)	THJ347	M3×14 Flat head screw(black)(10pcs)
THJ252	2 speed gear box set(1pc)	THJ348	M4×25 Flat head screw(black)(10pcs)
THJ253	60T Spur gear slipper set(1pc)	THJ349	M3×5 Set Screw(black)(10pcs)
THJ255	2 speed gear box brace(1pc)	THJ350	M2.5 Nylon Nut(black)(10pcs)
THJ256	Transfer box set(1pc)	THJ352	Washer 3×7×0.5mm(10pcs)
THJ259	Linkage ball set(2pcs)	THJ353	Washer 5×8×0.5mm(10pcs)
THJ260	Servo arm set(1pc)	THJ354	Washer 5×9×0.8mm(10pcs)
THJ261	Servo arm(1pc)	THJ356	Washer 15×17×0.2mm(10pcs)
THJ262	Front bumper set(1pc)	THJ358	M2.2×8 Tp.Binder Head Screw(black)(10pcs)
THJ263	Rear bumper set(1pc)	THJ359	TH2503 servo(4pcs)
THJ264	Side plates set(1pc)	THJ360	550 Motor 28T(1pc)
THJ266	Shock hoops set(1pc)	THJ361	Dust proof set(1pc)
THJ267	Body mount set(1pc)	THJ365	Double side tape kit(1pc)
THJ268	ESC dust cover(1pc)	THJ367	Gearshift pin(1pc)
THJ269	Battery mount plate set	THJ369	Clear body set(1pc)
THJ270	Body decoration set	THJ391	M2.5×4 Button head screw(black)(10pcs)
THJ274	Solid axle set front(1pc)	THJ396	Bearing 12×18×4(4pcs)
THJ275	Solid axle set rear(1pc)	THJ397	Bearing 5×9×3(4pcs)
THJ276	Bearing seat(2pcs)	THJ398	E-clip 7mm(10pcs)
THJ277	Differential lock set(2pcs)	THJ399	M2.5×10 Cap head screw(black)(10pcs)
THJ278	12T Bevel gear set(2pcs)	THJ400	M2.5×12 Cap head screw(black)(10pcs)
THJ279	36T Bevel gear(2pcs)	THJ401	M3×10 Cap head screw(black)(10pcs)
THJ280	Diff gear set(2pcs)	THJ402	M1.6×4 Cap head screw(silver)(10pcs)
THJ282	Straight axle Shaft(2pcs)	THJ403	M1.6×5 Cap head screw(black)(10pcs)
THJ284	Gear-Box First Shaft(1pc)	THJ404	M1.6×16 Cap head screw(black)(10pcs)
THJ285	Motor mount plate(1pc)	THJ405	M2×4 Cap head screw(silver)(10pcs)
THJ286	Gear-Box Second Shaft(1pc)	THJ406	Antenna set(1pc)
THJ288	18T Spur gear(1pc)	THJ407	Up threaded stainless steel link for FOUNDER II(2pcs)
THJ290	Transfer case rear output shaft(1pc)	THO003	Transfer case steel gear(20T)
THJ291	Shift link set(1pc)	THO004	Transfer case steel gear(25T)
THJ292	Transfer box clutch link set(1pc)	THO006	Aluminum differential housing(1pc)
THJ293	Connecting seat(1pc)	THO012	2WD/4WD Shifting fork and synchronizer(1pc)
THJ295	Ball 5.5mm(1pc)	THO013	Synchronizer gear (32T) for 2-Speed 2nd gear(1pc)
THJ296	Ball 5.8mm(5pcs)	THO014	Synchronizer gear(25T) for 2WD/4WD Shifting(1pc)
THJ297	Down threaded stainless steel link(2pcs)	THO015	Transfer case short drive shaft set(1pc)
THJ298	Up threaded stainless steel link(2pcs)	THO025	Portal axle system(1pc)
THJ299	Front threaded stainless steel link(1pc)	THO026	90mm shock(4pcs)
THJ300	Steering threaded Stainless steel link(1pc)	THO027	Blade side frame(1pc)
THJ301	Servo threaded Stainless steel link(1pc)	THO028	Armor wheel lintel(1pc)
THJ302	Gearbox turnbuckle set(1pc)	THO029	Angry face(1pc)
THJ303	Transfer case turnbuckle set(1pc)	THO031	Wiper(1pc)
THJ304	Servo mount plate(1pc)	THO032	Lamp cover(1pc)
THJ305	Front cable set(1pc)	THO033	Standby tank rack(1pc)
THJ306	Rear cable set(1pc)	THO034	Mudguard(1pc)
THJ307	Chassis rail set(1pc)	THO102	Window sheet(1pc)
THJ308	Magnet set(1pc)	THE001	TH-GT5 Transmitter(6channels)(1pc)
THJ309	Bearing 15×21×4mm(1pc)		
THJ310	E-clip 2mm(1pc)		

# TRACTION

H O B B Y

[www.tractionhobby.com](http://www.tractionhobby.com)